



Care  
Creations™

■ - BASF  
We create chemistry

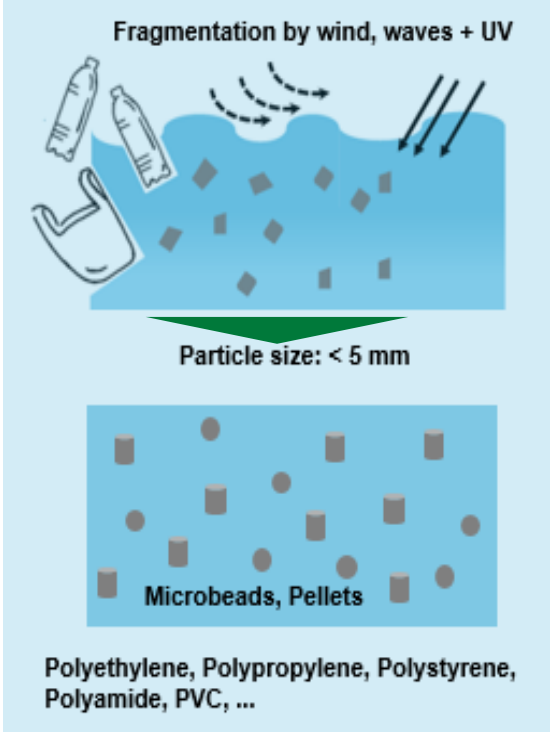
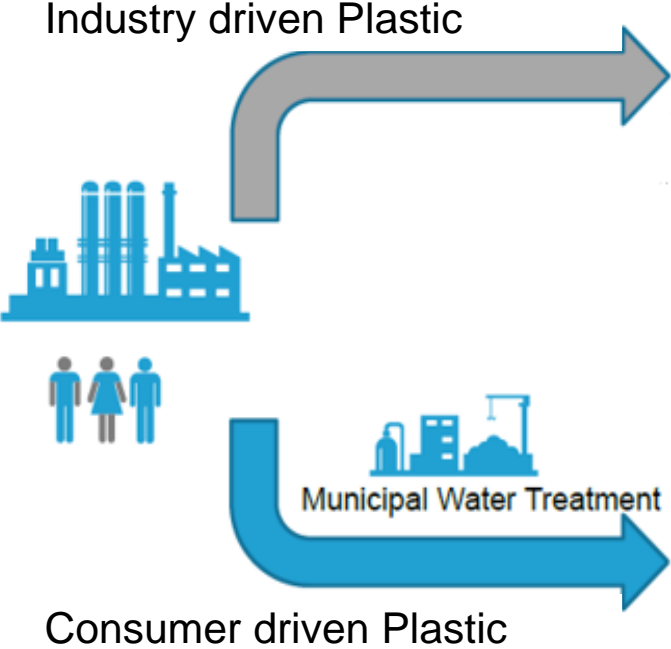
## Cegesoft® Peel

The eco-friendly and gentle exfoliant

Monheim | September 2018

# Cegesoft® Peel

## Sources of Plastics



### Examples Cosmetic Industry

Packaging  
(e.g. bottles, sachet bags, etc)



„beads“ as abrasives in cleansing products



# Cegesoft® Peel

## Social media\* discussions related to concerns over microplastic and microbeads in Personal Care products

### Important facts on plastic beads in Personal Care products



Plastic beads are not biodegradable and can accumulate in marine ecosystems

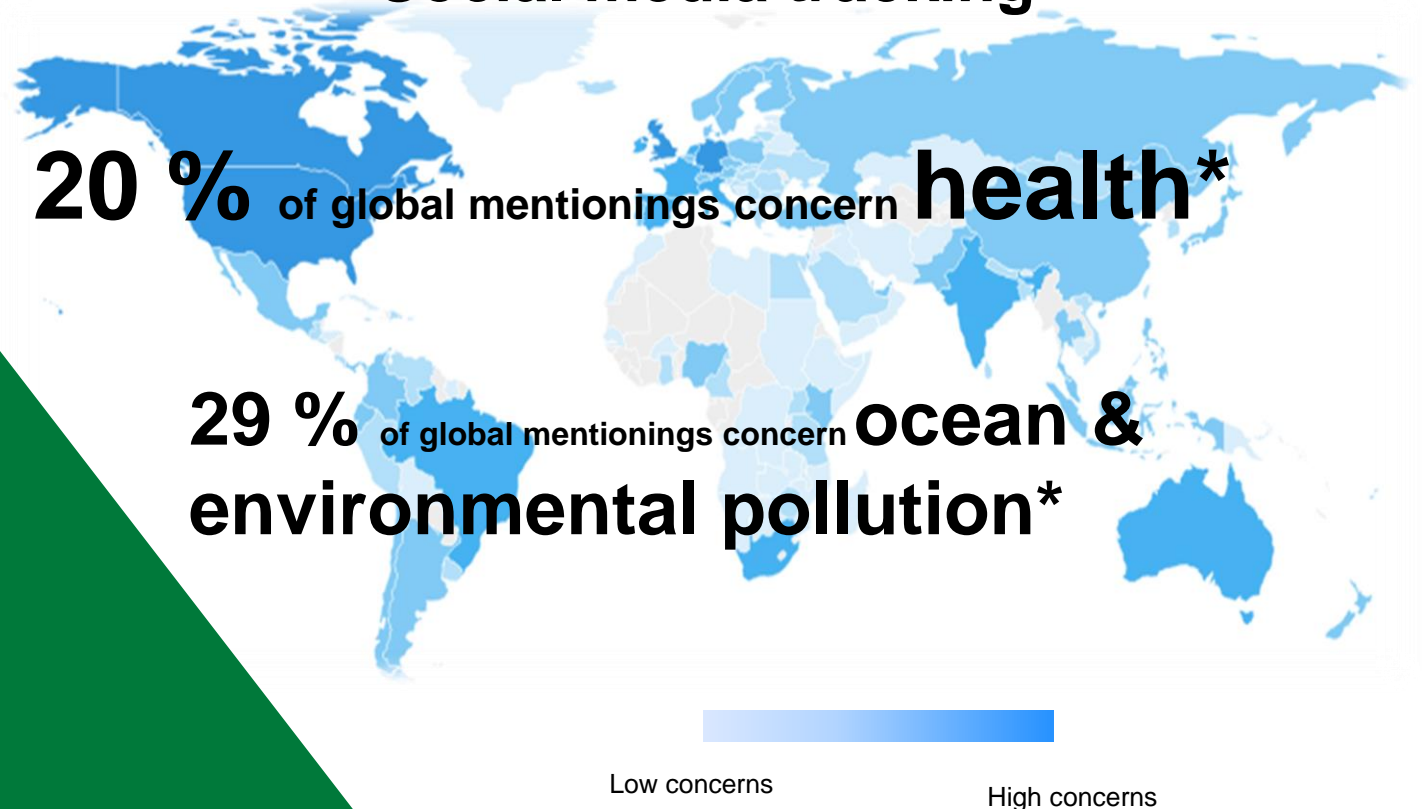


Plastic beads found in flesh of fish for human consumption



Several countries already fully banned plastic beads for cosmetic purposes

### Social media tracking



## Plastic beads in personal care products are still on consumers minds

# Consumer Needs

It never hurts to be eco-friendly

## Mild to Environment



Sustainable Sourcing



Biodegradability

## Mild to Skin



Gentle and mild exfoliation



# Cegesoft® Peel

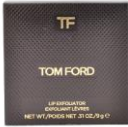
## Peeling products

Consumers are looking for a luxurious experience with peeling products.

Face Cleansers



Lip Exfoliator



Hand Scrub



Body Cleanser



Shower products

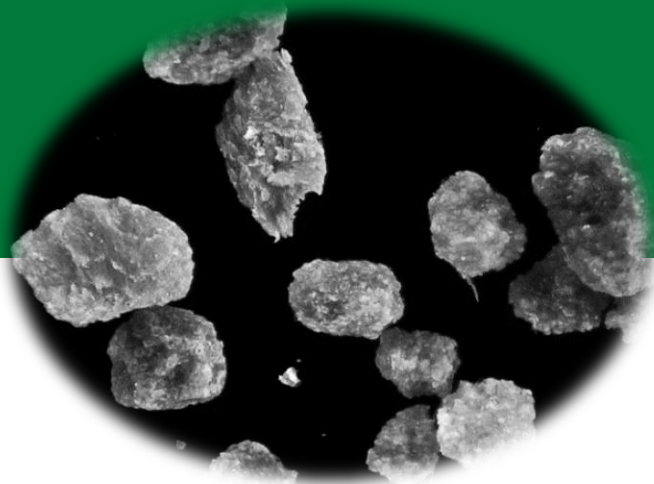


> Gentle and mild exfoliation <

# Cegesoft® Peel

Are you tired of sharp-edged exfoliants?

Cellulose



Sharp-edged

Cegesoft® Peel



Smooth and spherical surface

Silica



Sharp-edged

Time to get smooth!

# Cegesoft® Peel

## Product Profile

Cegesoft® Peel is a readily biodegradable, wax-based exfoliant



**INCI Name**

Glycol Distearate

**Appearance**

White, spherical beads

**Melting point**

68 – 75 °C

**Particle size**

dv (50) 750 µm

**Sustainability**

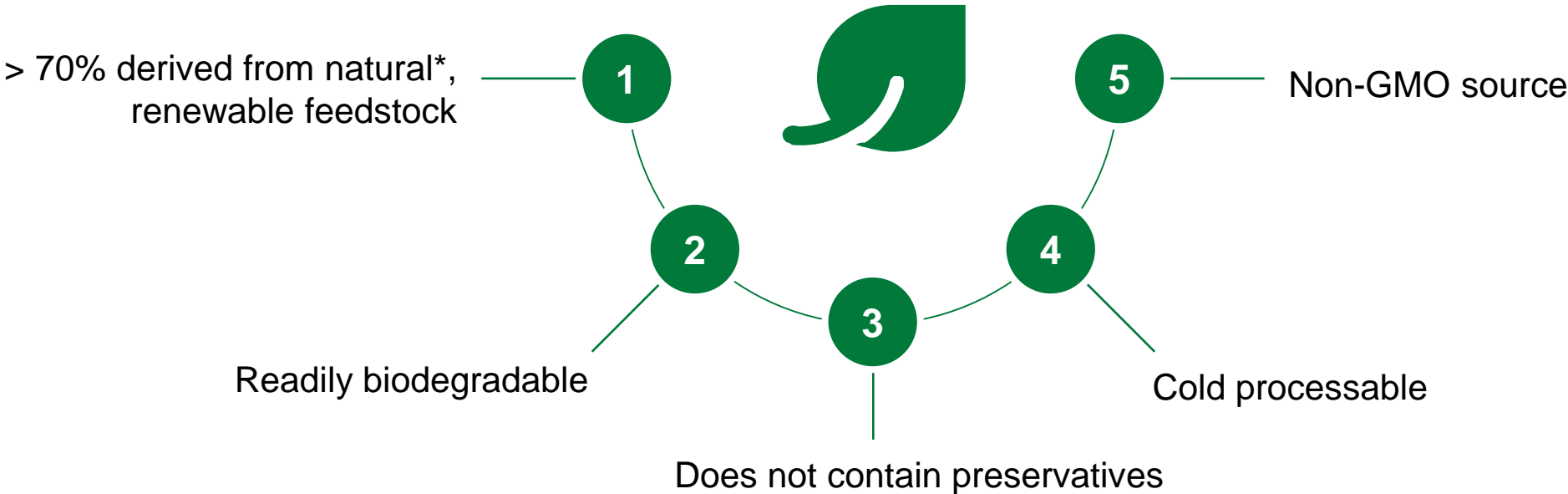
 Readily biodegradable

**Recommended use level**

1 – 4 %

# Cegesoft® Peel

## Sustainability Benefits





# Natural Face Scrub

## HB-DE-18-031-13

Phase	Ingredients	INCI	% by weight	Function
A	Water, demin.	Aqua	52.49	
	Rheocare® XGN	Xanthan Gum	0.90	Rheology modifier
B	Plantapon® LGC SORB	Sodium Lauryl Glucose Carboxylate (and) Lauryl Glucoside	20.00	Surfactant
	Dehyton® AB 30	Coco Betaine	20.00	Surfactant
	D-Panthenol 75 W	Panthenol	1.00	Active Ingredient
	Copherol® 1250 C	Tocopheryl Acetate	0.10	Active Ingredient
	Glycerin	Glycerin	2.00	Humectant
	Perfume Cotton Touch (Symrise)	Parfum	0.30	Fragrance
C	Sodium Benzoate	Sodium Benzoate	0.50	Preservative
	Citric Acid (50% solution)	Citric Acid	q.s.	pH Adjustment
D	Cegesoft® Peel	Glycol Distearate	3.00	Exfoliant
	Puricolor® Blue ABL9 FDA (1% solution)	Glycerin	0.01	Colorant

### Specifications

Appearance	Turquoise with white beads
pH value (23°C)	~ 4.7
Viscosity (Brookfield; RVT; spindle 4; 10 rpm; 23°C)	~ 5400 mPa s

# Candy Shower Peeling

## HB-DE-18-031-30

Phase	Ingredients	INCI	% by weight	Function
A	Texapon® N 70	Sodium Laureth Sulfate	10.00	Surfactant
	Plantapon® LGC SORB	Sodium Lauryl Glucose Carboxylate (and) Lauryl Glucoside	7.00	Surfactant
	Dehyton® PK 45	Cocamidopropyl Betaine	5.40	Surfactant
	D-Panthenol 75 W	Panthenol	14.30	Active ingredient
	Cetiol® HE	Sodium Benzoate	0.50	Emollient
	Vanille Himbeer Natura (Düllberg)	Fragrance	0.40	Fragrance
B	Water, demin.	Aqua	63.90	
C	Rheocare® TTA	Acrylates Copolymer	0.90	Rheology modifier
D	Preservative		q.s.	Preservative
	Sodium Hydroxide (20% solution)	Sodium Hydroxide	q.s.	pH Adjustment
	Sodium Chloride	Sodium Chloride	q.s.	Rheology modifier
E	Cegesoft® Peel	Glycol Distearate	4.00	Exfoliant
	Puricolor® Red ARE33 FDA (1% solution)	CI 17200	0.05	Colorant
	Reflecks™ Pinpoints of Pearl G130L	Calcium Sodium Borosilicate, Titanium Dioxide	0.05	Effect pigment

### Specifications

Appearance

Pink formula with glitter and white beads

pH value (23°C)

~ 6.0

Viscosity (Brookfield; RVT; spindle 4; 10 rpm; 23°C)

~ 13300 mPa s



# Cegesoft® Peel

Mild to Environment  
Mild to Skin

**“Beads with Benefits”**

# Disclaimer

---

“This document, or any answers or information provided herein by BASF, does not constitute a legally binding obligation of BASF. While the descriptions, designs, data and information contained herein are presented in good faith and believed to be accurate, it is provided for your guidance only. Because many factors may affect processing or application/use, we recommend that you make tests to determine the suitability of a product for your particular purpose prior to use. It does not relieve our customers from the obligation to perform a full inspection of the products upon delivery or any other obligation. NO WARRANTIES OF ANY KIND, EITHER EXPRESS OR IMPLIED, INCLUDING WARRANTIES OF MERCHANTABILITY OR FITNESS FOR A PARTICULAR PURPOSE, ARE MADE REGARDING PRODUCTS DESCRIBED OR DESIGNS, DATA OR INFORMATION SET FORTH, OR THAT THE PRODUCTS, DESIGNS, DATA OR INFORMATION MAY BE USED WITHOUT INFRINGING THE INTELLECTUAL PROPERTY RIGHTS OF OTHERS. IN NO CASE SHALL THE DESCRIPTIONS, INFORMATION, DATA OR DESIGNS PROVIDED BE CONSIDERED A PART OF OUR TERMS AND CONDITIONS OF SALE.”

  
We create chemistry

Care  
Creations™